



High-Performance airMAX® Bridge



Overview

Starting with the first-generation NanoBridge®, Ubiquiti Networks pioneered the all-in-one design for an airMAX® product functioning as a CPE (Customer Premises Equipment). Now Ubiquiti Networks launches the latest generation of CPE, the NanoBeam®.

Improved Noise Immunity

Available for the 2.4 and 5 GHz frequency bands, the NanoBeam directs RF energy in a tighter beamwidth. With the focus in one direction, the NanoBeam blocks or spatially filters out noise, so noise immunity is improved. This feature is especially important in an area crowded with other RF signals of the same or similar frequency.

Integrated Design

The Ubiquiti® Research and Development team combined the radio and antenna to create a more efficient and compact CPE. The NanoBeam gets maximum gain out of the smallest footprint.

Providing increased performance from its faster processor and innovative mechanical design at a low cost, the NanoBeam is extremely versatile and cost-effective to deploy.

airMAX Technology Included

Unlike standard Wi-Fi protocol, Ubiquiti's Time Division Multiple Access (TDMA) airMAX protocol allows each client to send and receive data using pre-designated time slots scheduled by an intelligent AP controller.

This time slot method eliminates hidden node collisions and maximizes airtime efficiency. It provides significant performance improvements in latency, throughput, and scalability compared to all other outdoor systems in its class.

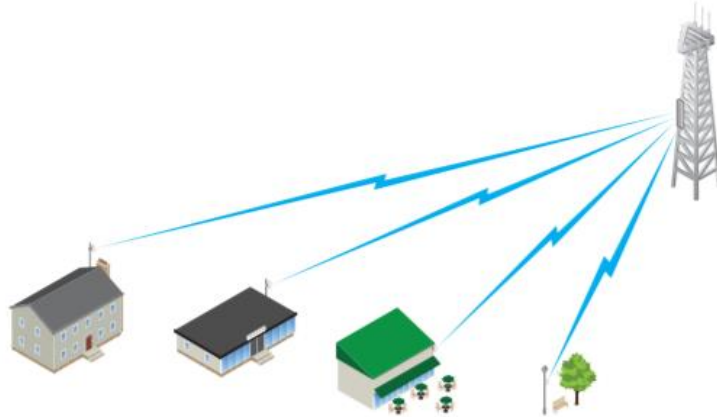
Intelligent QoS Priority is given to voice/video for seamless streaming.

Scalability High capacity and scalability.

Long Distance Capable of high-speed, carrier-class links.

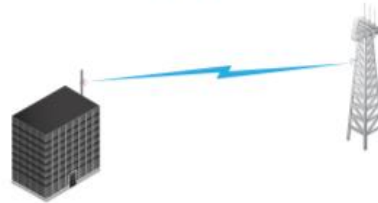
Application Examples

PtMP Client Links



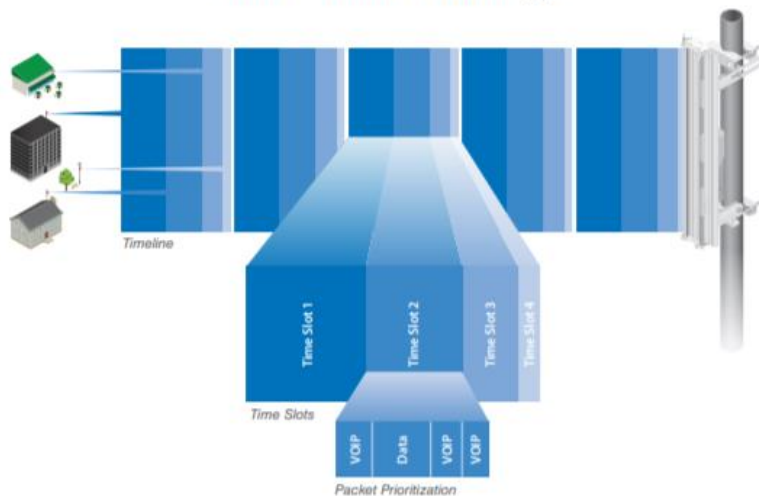
The NanoBeam used as a CPE device for each client in an airMAX PtMP network.

PtP Link



Use a NanoBeam on each side of a PtP link.

airMAX TDMA Technology

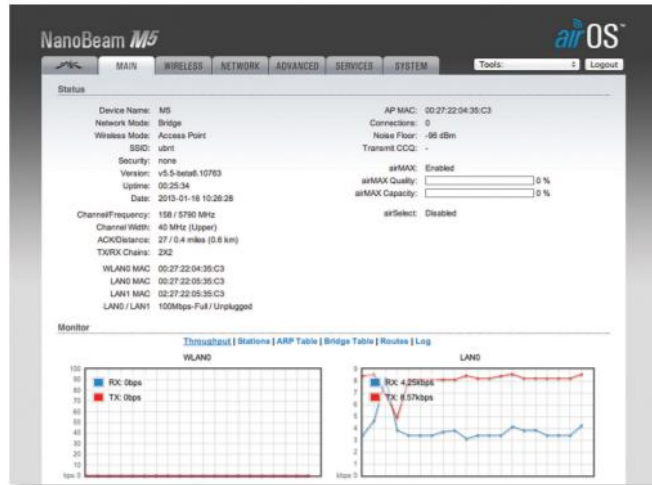


Software

airOS®

airOS® is an intuitive, versatile, highly developed Ubiquiti firmware technology. It is exceptionally intuitive and was designed to require no training to operate. Behind the user interface is a powerful firmware architecture, which enables high-performance, outdoor multi-point networking.

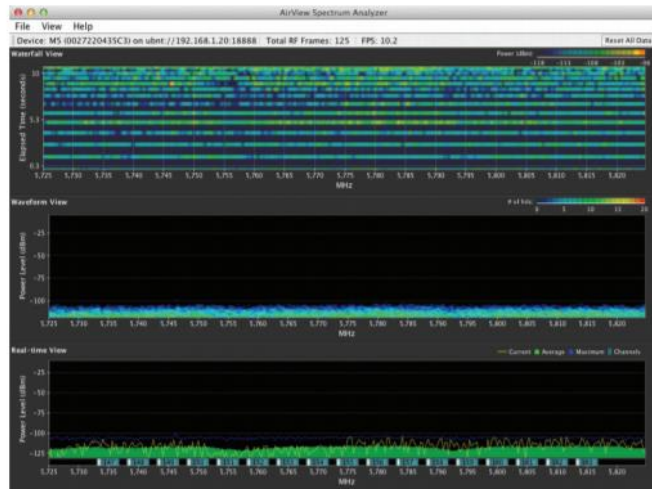
- Protocol Support
- Ubiquiti Channelization
- Spectral Width Adjustment
- ACK Auto-Timing
- AAP Technology
- Multi-Language Support



airView®

Integrated on all Ubiquiti M products, airView® provides advanced spectrum analyzer functionality: waterfall, waveform, and real-time spectral views allow operators to identify noise signatures and plan their networks to minimize noise interference.

- **Waterfall** Aggregate energy over time for each frequency.
- **Waveform** Aggregate energy collected.
- **Real-time** Energy is shown in real time as a function of frequency.
- **Recording** Automate airView to record and report results.



airControl®

airControl® is a powerful and intuitive, web-based server network management application, which allows operators to centrally manage entire networks of Ubiquiti devices.

- Network Map
- Monitor Device Status
- Mass Firmware Upgrade
- Web UI Access
- Manage Groups of Devices
- Task Scheduling



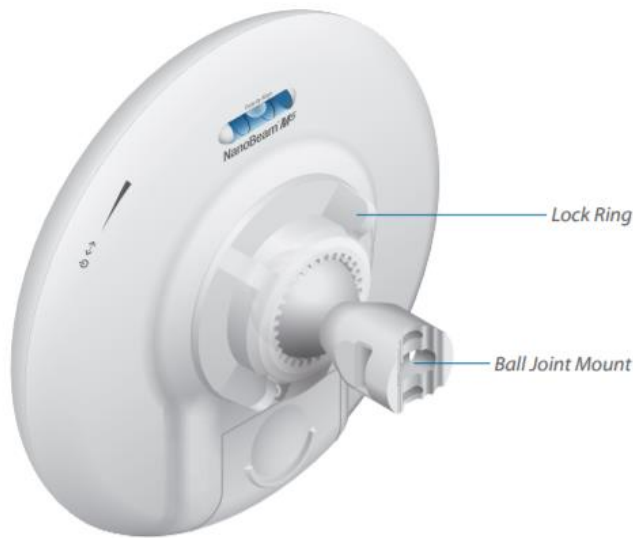
Hardware Overview

Innovative Mechanical Design

- **All-in-one design** The NanoBeam provides both the radio and antenna in the smallest possible footprint.
- **Quick and easy installation** No fasteners are required for pole-mounting, and a single wall fastener (not included) is required for wall-mounting.
- **Convenient alignment** The NanoBeam pivots on its ball joint for easy aiming.

Compact Form Factor

- **Efficient footprint** The radio and antenna are combined into a single body that takes up minimal space.
- **Versatile mounting** The NanoBeam can be mounted in almost any position needed for line of sight.
- **Aesthetics** The NanoBeam is small enough to blend discreetly into the background at a customer's location.



NBE-M5-19 with Mounting Hardware

Optional Isolator Shield Accessory



IsoBeam™

Model	NBE-M2-13	NBE-M5-16	NBE-M5-19
ISO-BEAM-16		✓	
ISO-BEAM-19	✓		✓

An RF isolator shield is available as an optional accessory to enhance signal isolation.





Optional Mounting Accessories

NanoBeam® Wall Mount Kit



NanoBeam® Window Mount

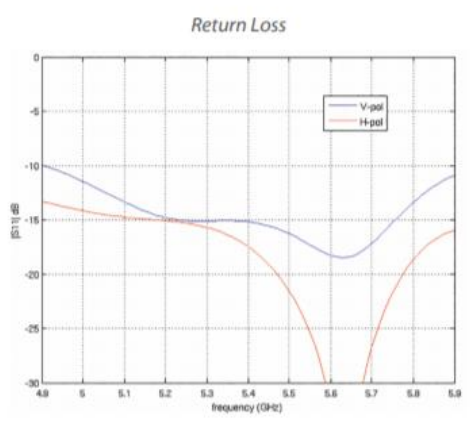
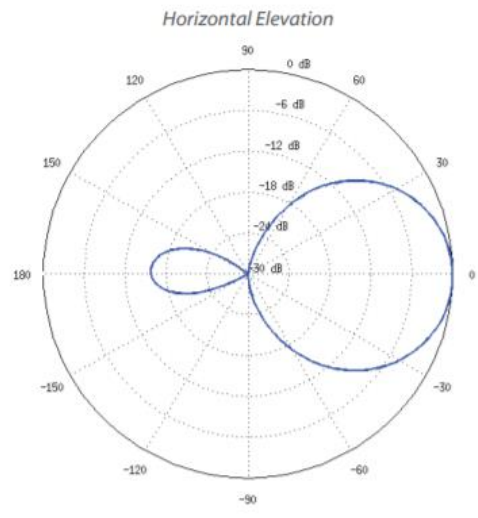
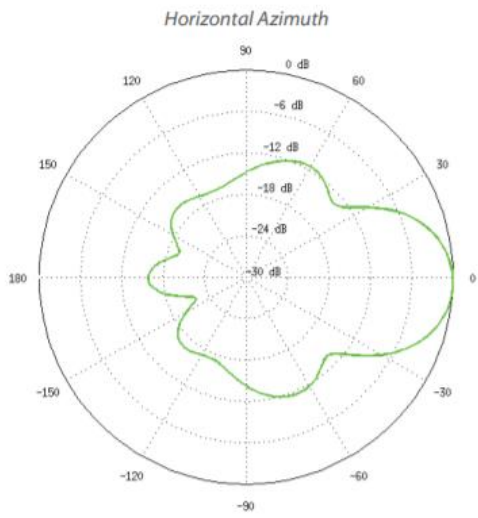
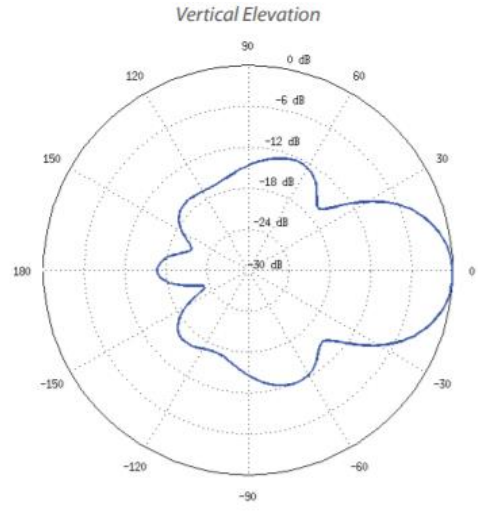
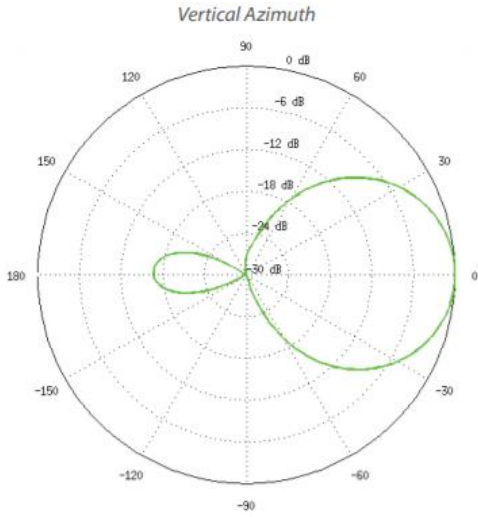




Specifications

NBE-M2-13	
Dimensions	189 x 189 x 125 mm (7.44 x 7.44 x 4.92")
Weight	0.530 kg (1.17 lb)
Power Supply	24V, 0.5A PoE
Max. Power Consumption	6W
Operating Frequency	2405 - 2475 MHz
Gain	13 dBi
Networking Interface	(1) 10/100 Ethernet Port
Processor Specs	Atheros MIPS 74Kc, 560 MHz
Memory	64 MB DDR2, 8 MB Flash
LEDs	(1) Power, (1) LAN, (4) WLAN
Signal Strength LEDs	Software-Adjustable to Correspond to Custom RSSI Levels
Channel Sizes	5/8/10/20/30/40 MHz
Polarization	Dual Linear
Enclosure	Outdoor UV Stabilized Plastic
Mounting	Pole-Mount (Kit Included), Wall-Mount
Wind Loading	45.4 N @ 200 km/h (10.2 lbf @ 125 mph)
Wind Survivability	200 km/h (125 mph)
ESD/EMP Protection	Air: ± 24 kV, Contact: ± 24 kV
Operating Temperature	-40 to 80° C (-40 to 176° F)
Operating Humidity	5 to 95% Noncondensing
Wireless Approvals	FCC, IC, CE
RoHS Compliance	Yes
Salt Fog Test	IEC 68-2-11 (ASTM B117), Equivalent: MIL-STD-810 G Method 509.5
Vibration Test	IEC 68-2-6
Temperature Shock Test	IEC 68-2-14
UV Test	IEC 68-2-5 at 40° C (104° F), Equivalent: ETS 300 019-1-4
Wind-Driven Rain Test	ETS 300 019-1-4, Equivalent: MIL-STD-810 G Method 506.5

NBE-M2-13 Output Power: 28 dBm							
TX Power Specifications				RX Power Specifications			
Modulation	Data Rate	Avg. TX	Tolerance	Modulation	Data Rate	Sensitivity	Tolerance
802.11g	1 - 24 Mbps	28 dBm	± 2 dB	802.11g	1 - 24 Mbps	-94 dBm Min.	± 2 dB
	36 Mbps	26 dBm	± 2 dBQ		36 Mbps	-80 dBm	± 2 dB
	48 Mbps	25 dBm	± 2 dB		48 Mbps	-77 dBm	± 2 dB
	54 Mbps	24 dBm	± 2 dB		54 Mbps	-75 dBm	± 2 dB
802.11n/airMAX	MCS0	28 dBm	± 2 dB	802.11n/airMAX	MCS0	-96 dBm	± 2 dB
	MCS1	28 dBm	± 2 dB		MCS1	-95 dBm	± 2 dB
	MCS2	27 dBm	± 2 dB		MCS2	-92 dBm	± 2 dB
	MCS3	26 dBm	± 2 dB		MCS3	-90 dBm	± 2 dB
	MCS4	25 dBm	± 2 dB		MCS4	-86 dBm	± 2 dB
	MCS5	24 dBm	± 2 dB		MCS5	-83 dBm	± 2 dB
	MCS6	23 dBm	± 2 dB		MCS6	-77 dBm	± 2 dB
	MCS7	22 dBm	± 2 dB		MCS7	-74 dBm	± 2 dB
	MCS8	28 dBm	± 2 dB		MCS8	-96 dBm	± 2 dB
	MCS9	28 dBm	± 2 dB		MCS9	-95 dBm	± 2 dB
	MCS10	27 dBm	± 2 dB		MCS10	-92 dBm	± 2 dB
	MCS11	26 dBm	± 2 dB		MCS11	-90 dBm	± 2 dB
	MCS12	25 dBm	± 2 dB		MCS12	-86 dBm	± 2 dB
	MCS13	24 dBm	± 2 dB		MCS13	-83 dBm	± 2 dB
	MCS14	23 dBm	± 2 dB		MCS14	-77 dBm	± 2 dB
MCS15	22 dBm	± 2 dB	MCS15	-74 dBm	± 2 dB		

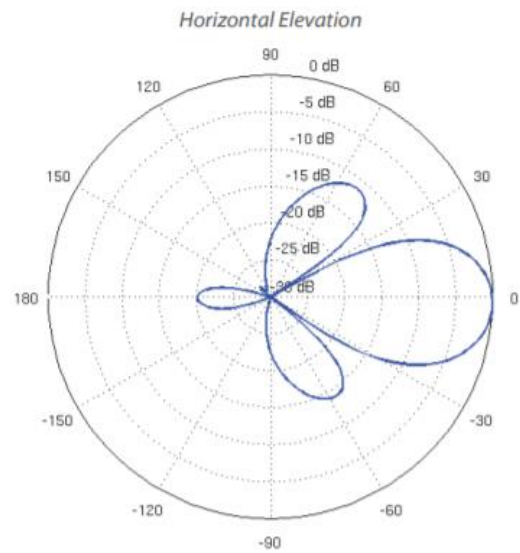
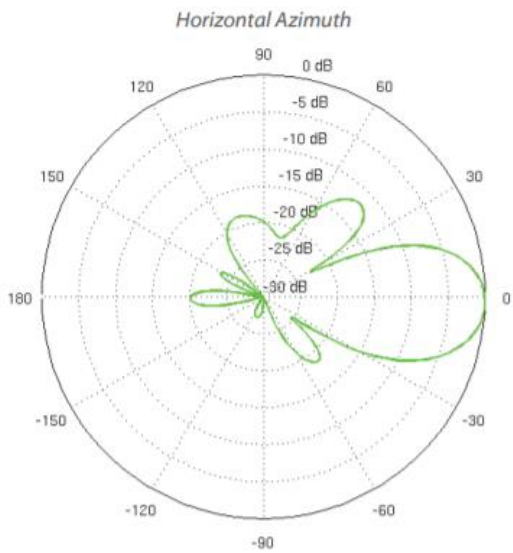
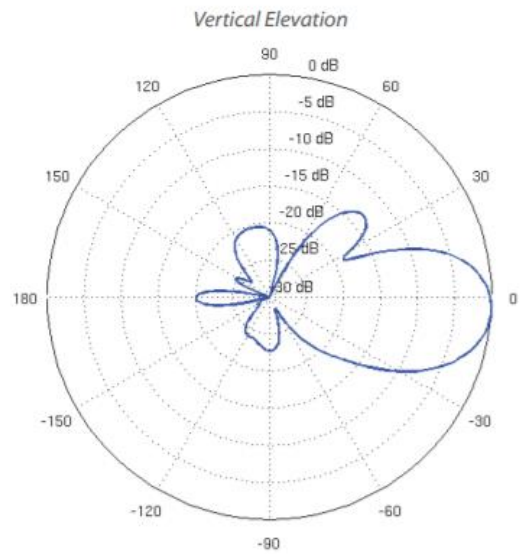
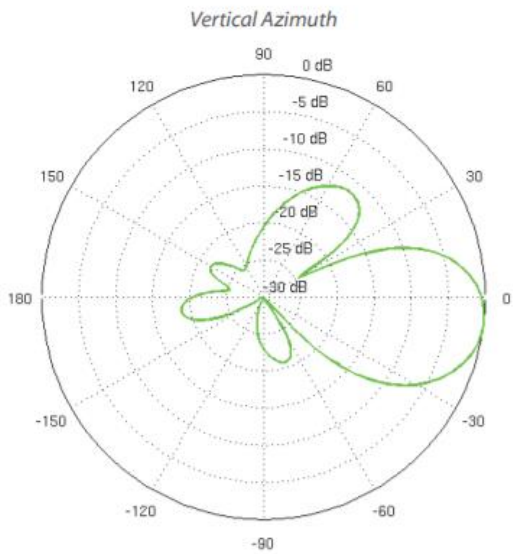




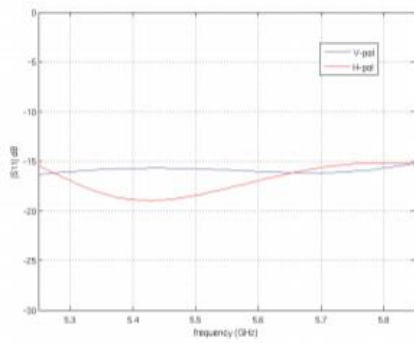
Specifications

NBE-M5-16					
Dimensions	140 x 140 x 54 mm (5.51 x 5.51 x 2.13")				
Weight	0.320 kg (0.71 lb)				
Power Supply	24V, 0.5A PoE				
Max. Power Consumption	6W				
Operating Frequency	Worldwide	USA: U-NII-1	USA: U-NII-2A	USA: U-NII-2C	USA: U-NII-3
	5150 - 5875 MHz	5150 - 5250 MHz*	5250 - 5350 MHz*	5470 - 5725 MHz*	5725 - 5850 MHz*
Gain	16 dBi				
Networking Interface	(1) 10/100 Ethernet Port				
Processor Specs	Atheros MIPS 74Kc, 560 MHz				
Memory	64 MB DDR2, 8 MB Flash				
LEDs	(1) Power, (1) LAN, (4) WLAN				
Signal Strength LEDs	Software-Adjustable to Correspond to Custom RSSI Levels				
Max. VSWR	1.5:1				
Channel Sizes	5/8/10/20/30/40 MHz				
Polarization	Dual Linear				
Enclosure	Outdoor UV Stabilized Plastic				
Mounting	Pole-Mount (Kit Included), Wall-Mount				
Wind Loading	21.4 N @ 200 km/h (4.8 lbf @ 125 mph)				
Wind Survivability	200 km/h (125 mph)				
ESD/EMP Protection	Air: ± 24 kV, Contact: ± 24 kV				
Operating Temperature	-40 to 70° C (-40 to 158° F)				
Operating Humidity	5 to 95% Noncondensing				
Wireless Approvals	FCC, IC, CE				
RoHS Compliance	Yes				
Salt Fog Test	IEC 68-2-11 (ASTM B117), Equivalent: MIL-STD-810 G Method 509.5				
Vibration Test	IEC 68-2-6				
Temperature Shock Test	IEC 68-2-14				
UV Test	IEC 68-2-5 at 40° C (104° F), Equivalent: ETS 300 019-1-4				
Wind-Driven Rain Test	ETS 300 019-1-4, Equivalent: MIL-STD-810 G Method 506.5				

NBE-M5-16 Output Power: 26 dBm							
TX Power Specifications				RX Power Specifications			
Modulation	Data Rate	Avg. TX	Tolerance	Modulation	Data Rate	Sensitivity	Tolerance
802.11a	6 - 24 Mbps	26 dBm	± 2 dB	802.11a	6 - 24 Mbps	-94 dBm Min.	± 2 dB
	36 Mbps	25 dBm	± 2 dB		36 Mbps	-80 dBm	± 2 dB
	48 Mbps	24 dBm	± 2 dB		48 Mbps	-77 dBm	± 2 dB
	54 Mbps	23 dBm	± 2 dB		54 Mbps	-75 dBm	± 2 dB
802.11n/airMAX	MCS0	26 dBm	± 2 dB	802.11n/airMAX	MCS0	-96 dBm	± 2 dB
	MCS1	25 dBm	± 2 dB		MCS1	-95 dBm	± 2 dB
	MCS2	25 dBm	± 2 dB		MCS2	-92 dBm	± 2 dB
	MCS3	25 dBm	± 2 dB		MCS3	-90 dBm	± 2 dB
	MCS4	24 dBm	± 2 dB		MCS4	-86 dBm	± 2 dB
	MCS5	23 dBm	± 2 dB		MCS5	-83 dBm	± 2 dB
	MCS6	23 dBm	± 2 dB		MCS6	-77 dBm	± 2 dB
	MCS7	23 dBm	± 2 dB		MCS7	-74 dBm	± 2 dB
	MCS8	26 dBm	± 2 dB		MCS8	-95 dBm	± 2 dB
	MCS9	25 dBm	± 2 dB		MCS9	-93 dBm	± 2 dB
	MCS10	25 dBm	± 2 dB		MCS10	-90 dBm	± 2 dB
	MCS11	25 dBm	± 2 dB		MCS11	-87 dBm	± 2 dB
	MCS12	24 dBm	± 2 dB		MCS12	-84 dBm	± 2 dB
	MCS13	23 dBm	± 2 dB		MCS13	-79 dBm	± 2 dB
	MCS14	23 dBm	± 2 dB		MCS14	-78 dBm	± 2 dB
MCS15	23 dBm	± 2 dB	MCS15	-75 dBm	± 2 dB		



Return Loss





Specifications

NBE-M5-19					
Dimensions	189 x 189 x 125 mm (7.44 x 7.44 x 4.92")				
Weight	0.530 kg (1.17 lb)				
Power Supply	24V, 0.5A PoE				
Max. Power Consumption	8W				
Operating Frequency	Worldwide	USA: U-NII-1	USA: U-NII-2A	USA: U-NII-2C	USA: U-NII-3
	5150 - 5875 MHz	5150 - 5250 MHz*	5250 - 5350 MHz*	5470 - 5725 MHz*	5725 - 5850 MHz*
Gain	19 dBi				
Networking Interface	(1) 10/100 Ethernet Port				
Processor Specs	Atheros MIPS 74Kc, 560 MHz				
Memory	64 MB DDR2, 8 MB Flash				
LEDs	(1) Power, (1) LAN, (4) WLAN				
Signal Strength LEDs	Software-Adjustable to Correspond to Custom RSSI Levels				
Max. VSWR	1.5:1				
Channel Sizes	5/8/10/20/30/40 MHz				
Polarization	Dual Linear				
Enclosure	Outdoor UV Stabilized Plastic				
Mounting	Pole-Mount (Kit Included), Wall-Mount				
Wind Loading	45.4 N @ 200 km/h (10.2 lbf @ 125 mph)				
Wind Survivability	200 km/h (125 mph)				
ESD/EMP Protection	Air: ± 24 kV, Contact: ± 24 kV				
Operating Temperature	-40 to 70° C (-40 to 158° F)				
Operating Humidity	5 to 95% Noncondensing				
Wireless Approvals	FCC, IC, CE				
RoHS Compliance	Yes				
Salt Fog Test	IEC 68-2-11 (ASTM B117), Equivalent: MIL-STD-810 G Method 509.5				
Vibration Test	IEC 68-2-6				
Temperature Shock Test	IEC 68-2-14				
UV Test	IEC 68-2-5 at 40° C (104° F), Equivalent: ETS 300 019-1-4				
Wind-Driven Rain Test	ETS 300 019-1-4, Equivalent: MIL-STD-810 G Method 506.5				

NBE-M5-19 Output Power: 26 dBm							
TX Power Specifications				RX Power Specifications			
Modulation	Data Rate	Avg. TX	Tolerance	Modulation	Data Rate	Sensitivity	Tolerance
802.11a	6 - 24 Mbps	26 dBm	± 2 dB	802.11a	6 - 24 Mbps	-94 dBm Min.	± 2 dB
	36 Mbps	25 dBm	± 2 dB		36 Mbps	-80 dBm	± 2 dB
	48 Mbps	24 dBm	± 2 dB		48 Mbps	-77 dBm	± 2 dB
	54 Mbps	23 dBm	± 2 dB		54 Mbps	-75 dBm	± 2 dB
802.11n/airMAX	MCS0	26 dBm	± 2 dB	802.11n/airMAX	MCS0	-96 dBm	± 2 dB
	MCS1	25 dBm	± 2 dB		MCS1	-95 dBm	± 2 dB
	MCS2	25 dBm	± 2 dB		MCS2	-92 dBm	± 2 dB
	MCS3	25 dBm	± 2 dB		MCS3	-90 dBm	± 2 dB
	MCS4	24 dBm	± 2 dB		MCS4	-86 dBm	± 2 dB
	MCS5	23 dBm	± 2 dB		MCS5	-83 dBm	± 2 dB
	MCS6	23 dBm	± 2 dB		MCS6	-77 dBm	± 2 dB
	MCS7	23 dBm	± 2 dB		MCS7	-74 dBm	± 2 dB
	MCS8	26 dBm	± 2 dB		MCS8	-95 dBm	± 2 dB
	MCS9	25 dBm	± 2 dB		MCS9	-93 dBm	± 2 dB
	MCS10	25 dBm	± 2 dB		MCS10	-90 dBm	± 2 dB
	MCS11	25 dBm	± 2 dB		MCS11	-87 dBm	± 2 dB
	MCS12	24 dBm	± 2 dB		MCS12	-84 dBm	± 2 dB
	MCS13	23 dBm	± 2 dB		MCS13	-79 dBm	± 2 dB
	MCS14	23 dBm	± 2 dB		MCS14	-78 dBm	± 2 dB
MCS15	23 dBm	± 2 dB	MCS15	-75 dBm	± 2 dB		

